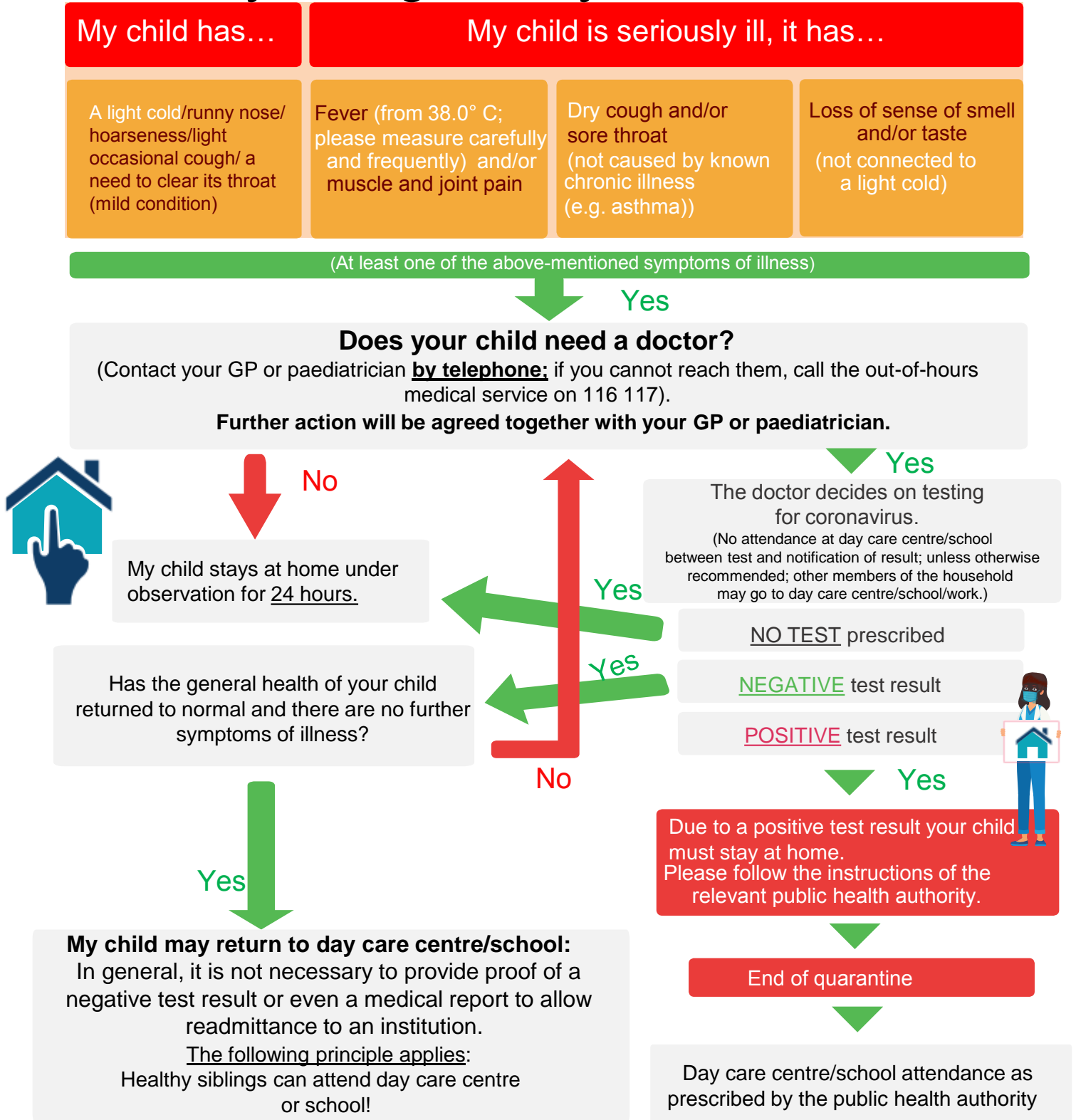




What to do if there are signs of illness in the case of high infection rates

(valid as of 26.10.2020, replaces plan dated 01.10.2020)

Should my child go to day care centre/school?



If your child is displaying acute signs of illness, please notify your day care centre or school without delay. If your child develops acute symptoms of an illness while at day care centre/school, the day care centre/school is required to notify you accordingly. Please remember that it is the joint duty of both parents and day care centre/school to protect all children as well as the personnel and their families from infection.